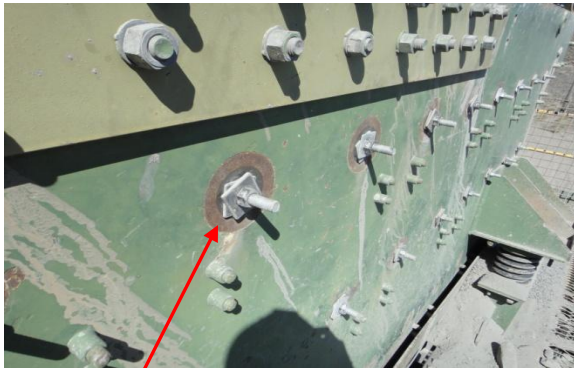


PLANT AUDIT REPORT

PLANT AUDIT PERFORMED	For :		
Place:			
Contact:			
Date of Audit :	Audit By :	David Hewitson and Alain Charbonneau	
Type of material processed :	Roadbase	Estimated Annual tonnages :	unkown

Please see the attached findings from the site visit performed on Date June 17, 2011.

#1



Observation:

Image #1 Missing the right angle washer preventing adequate screen cloth tension

Solution: Add a concave washer or a right angle washer.

#2



Observation:

Image #2 The frame of the deck is worn and missing which is critical for the efficiency of how the screen cloth can be tight to the crown support.

Solution: Repair or replace frame. Possibility to future protect your frame with polyurethane or rubber sheet.

#3



Observation:

Image #3 Rubber channel are worn out.

Solution: Always change the support bar capping rubber with each new installation of screen cloth. A mix of old and new rubber you will give uneven screen crown (camber) making it impossible to get even tension over the whole screen cloth.

#4



Observation:

Image #4 One clamp rail overlapping on two screens.

Solution: To have the screen length the same than the clamp rail. Presently clamp rail length is 1200mm and screen cloth are 1220mm. In future order screen cloths 1200mm long

#5



Observation:

Image #5 Pegging problem on the top deck.

Solution: Replace woven mesh screen cloth with a self screening Flexmat cloth, that will eliminate the pegging problem and at the same time you will increase the action on the second deck to eliminate the pegging problem on the second deck.

#6



Observation:

Image #6 Pegging problem on the bottom deck. Estimated at more than 50%

Solution: Install Flexmat self screening screens to eliminate the pegging problem, no need to clean the deck with a better performance and a cleaner material.

#7



Observation:

Image #7 Top deck - The hook is outside the clamp rail.

Solution: With the screen cloth the same length than the clamp rail (1200mm) you will eliminate this problem and gain better wear life for your screen cloth.

#8



Observation:

Image #8 Feed end can be a critical issue for screen wear life.

Solution: Install rubber screen cloth for the first panel of the feed end to receive the impact and at the same time that help to protect your frame.

Summary

Top deck - As you are most likely aware the top deck of your screen is in rather bad shape. It was explained to us that the contract is up for review in the next few months hence the reluctance to spend funds repairing a piece of equipment which may become redundant in the near future. However until that time arrives you still have to make do with what you have.

It is vitally important for optimum screening efficiency and screen cloth wear life that the screen deck has sufficient crown (camber). With inadequate crown the screen cloths cannot be tensioned enough. Poor tension prevents good stratification and allows the cloth to vibrate independently from the screen box. The vibrations cause the woven wires to rub together which make the weave loose. The looser the weave the more they rub until the wires eventually break and replacement is necessary.

With the screen frame in its current condition your screen cloth consumption on the top deck is likely to be many times more than if the frame were in good order and proper cloth tension could be maintained.

The screen box is built to metric measurement 1500 x 3600mm and should use screen cloths 1200mm long. The cloths being supplied are 1220mm long which means that they are too long to fit the side clamping bars, further compounding the tensioning problems and wear life.

Second deck – very significant pegging on the 2nd deck is severely affecting screening efficiency. With around 50-60% of the apertures pegged there is a high volume of material being re-circulated unnecessarily. It is difficult to quantify what the cost would be in terms of additional wear on screen cloths, wear liners, crushers, conveyers as well as the additional power consumption. It may be the case that the entire screening plant operating time could be reduced by as much as 25% to produce the same volume of material. Fortunately there is a very simple solution to your pegging problem.

Our Flexmats have a proven history in eliminating pegging and blinding. As an added bonus they usually last 2-3 times longer than woven mesh screens.

We recommend replacing your woven mesh screen cloths with high performance Flexmats

NEPEAN RUBBER appreciate the opportunity to work with your company to solve your screening problems, eliminate premature screen media failure, increase your production and reduce your cost per ton to produce saleable materials.

We hope that you find this audit report to be beneficial and we would be happy to work with you on any future screen media needs or screening challenges. Please feel free to contact us at the numbers listed below.

David Hewitson
Applications Engineer
Phone 0459 545064
Email david.hewitson@nepean-rubber.com.au